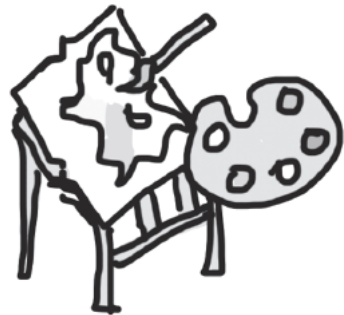


Welcome to Middle School Admissions



**For families in District 15
Applying now for Fall 2019**

What is the District 15 Diversity Plan?

We are launching a plan to increase diversity in all District 15 middle schools.

This plan was created through a year-long collaboration with school leaders, educators, parents and guardians, students, and community members.

Here are some of its goals:

Integration	Inclusion
<ul style="list-style-type: none">✓ Equitable admissions✓ Access to information✓ Transportation	<ul style="list-style-type: none">✓ Integrated schools✓ Restorative practices✓ Collaboration and engagement✓ Inclusive classrooms✓ Resource inequity✓ Students with special needs and physical access



What is the District 15 Diversity Plan?

We are launching a plan to increase diversity in all District 15 middle schools.

This plan was created through a year-long collaboration with school leaders, educators, parents and guardians, students, and community members.

Here are some of its goals:

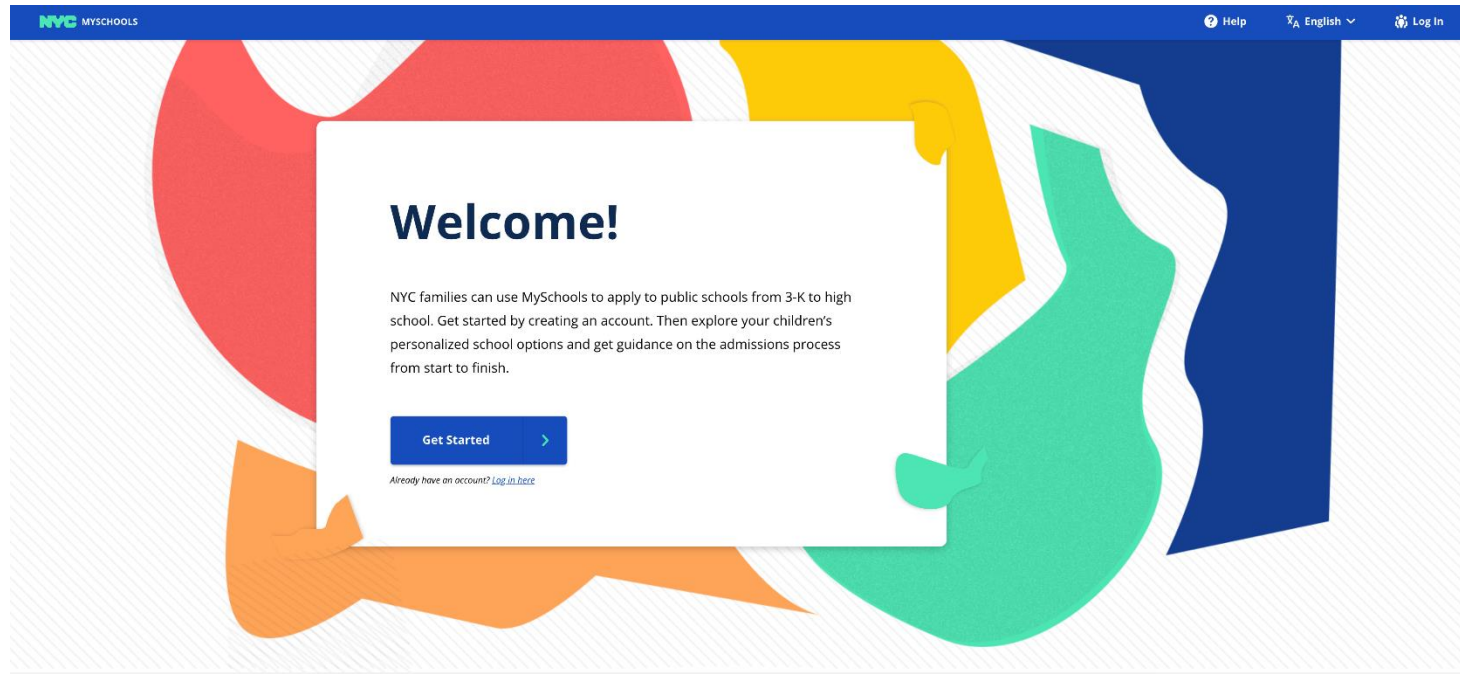
Integration	Inclusion
<ul style="list-style-type: none">✓ Equitable admissions✓ Access to information✓ Transportation	<ul style="list-style-type: none">✓ Integrated schools✓ Restorative practices✓ Collaboration and engagement✓ Inclusive classrooms✓ Resource inequity✓ Students with special needs and physical access



Today, we'll focus on what this means for your child's middle school application and admissions.

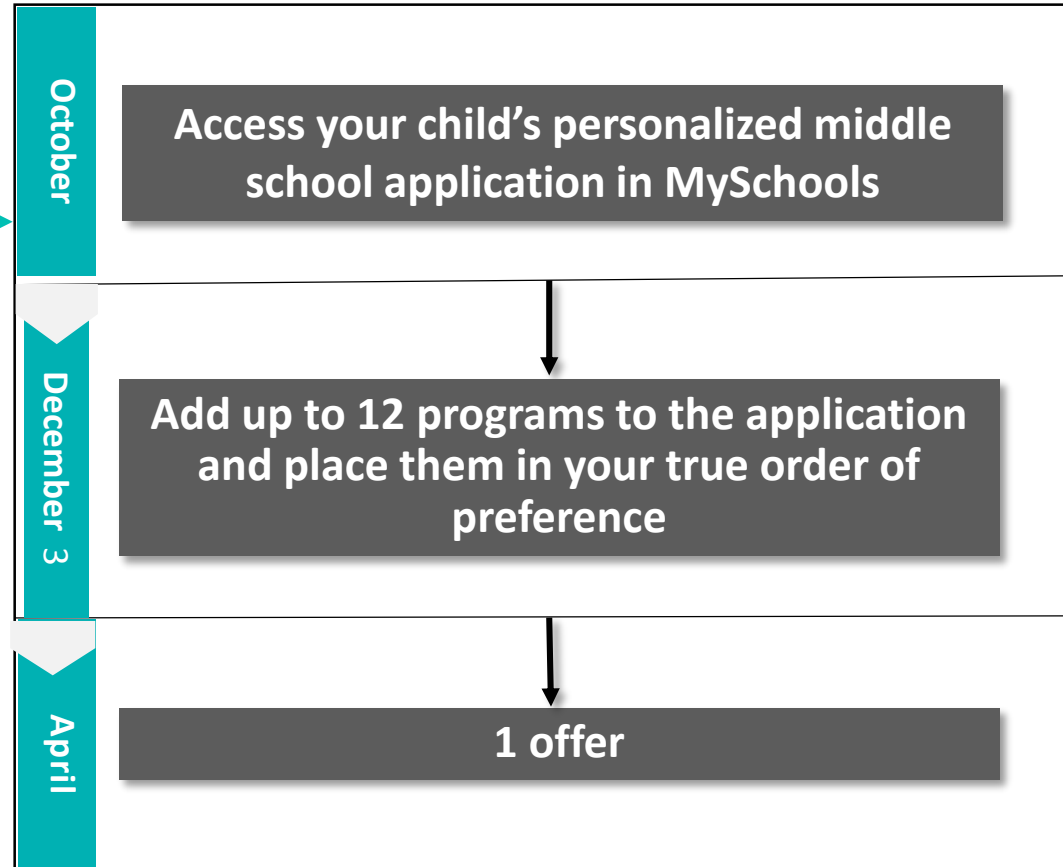
Will the D15 Plan change how my child applies to middle school?

NO. The only change in the application process is that all families across the city can apply to middle school online.



How do we apply?

Your elementary school will provide clear instructions on how to access your online application.



MySchools is both an online directory and your child's personalized application. It will include as options every middle school that your child is eligible to attend.

1. Access and review your child's application

This fall, your child's elementary school will share clear directions for how to create a MySchools account and access your child's personalized online middle school application.

When you access the application, **be sure to review all information about your child:**

- ✓ Make sure all personal information, including your child's address, is correct.
- ✓ Make sure your child's academic record is accurate.
 - District 15 schools will **NOT** see your child's academic record or use this information to select students.
 - However, if you apply to boroughwide and citywide programs that consider academics, they will be able to see this information.

If you see anything on your application that is inaccurate, contact your child's current elementary school as soon as possible.

2. Learn about schools

All the DOE public schools that your child can apply to will be included as options for their personalized application in MySchools. There are three types of middle schools for D15 students:

District Schools—District 15

Open to all students who live and/or attend public elementary school in District 15

If your child lives in one district and goes to school in another, they are eligible to apply to district schools in both districts.

Boroughwide Schools—Brooklyn

Open to all students who live or attend public elementary school in Brooklyn

Citywide Schools

Open to all students who live in NYC

Charter schools have a separate admissions process and are not part of the middle school application.

3. Choose schools for your child's application

Explore your middle school options in MySchools and add programs of interest to your Saved list. Go to open houses and the District 15 Middle School Fair, and ask questions.

How do you choose where to apply? Consider the following:

Travel

How will your child get from home to school each day?

How long is the commute?

Visiting the school is a good way to see what this trip is like!

Programs and courses offered

Does the school have a Dual Language program in your child's home language?

Are there specific academic courses, clubs, activities, or sports that appeal to you and your child?

School size

How many students go to the school?

Mission and vision

What makes the school special?

All District 15 schools welcome, support, and provide programs for English Language Learners and students with disabilities.

4. Complete your child's application

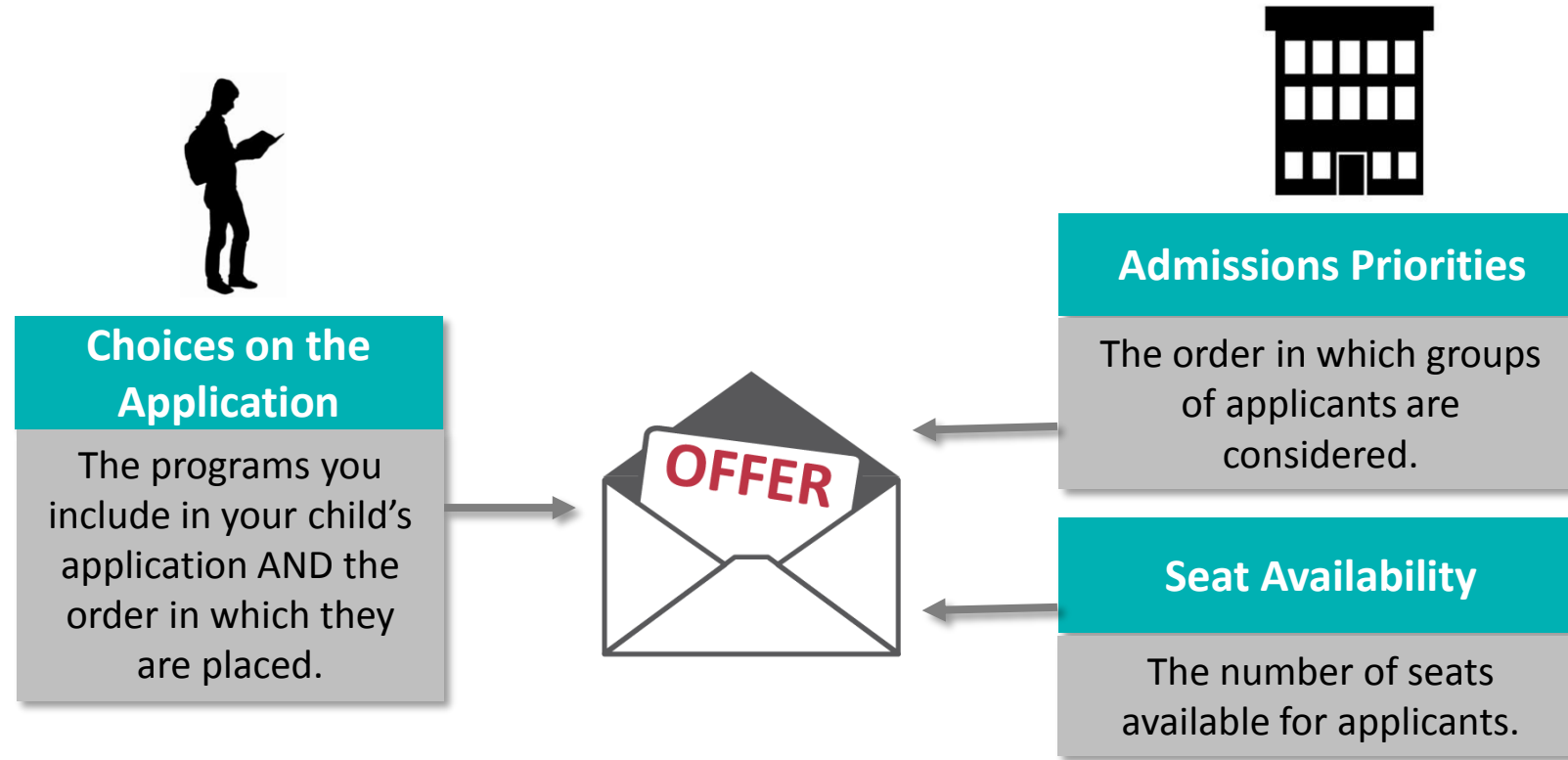
- Add up to 12 program choices to your child's application.
- Be sure to place them into your true order of preference, with your favorite program as #1.
- Submit the application by **December 3, 2018**.

Need help?

- Talk to your school counselor
- Visit a Family Welcome Center
- Call us at **718-935-2009**

TIP | After adding your favorite programs, consider adding more choices to your application. Remember, if you do not get an offer to a program from your application, you will be matched to a program with availability in your district.

How do students get middle school offers in D15?



Some boroughwide and citywide middle schools, as well as some district schools outside of District 15, also use admissions methods to evaluate and select students.

Will the D15 Plan change how students are matched to schools?

YES. To ensure that all students have access to all D15 middle schools, two key changes are being made:

- **No More Screened Schools** – All district middle schools in D15 will now use an open admissions method. This means they will no longer screen or select students based on their academic records.
- **Diversity in Admissions Priority** – The following applicants will now have an admissions priority for 52% of seats at each D15 middle school:
 - Students from low-income households
 - Students in temporary housing
 - English Language Learners

Will the D15 Plan change how students are matched to schools?

Let's say there is a D15 middle school with 100 6th grade seats. In D15:

- ✓ 52 of these seats are prioritized for students who are from low-income families, are in temporary housing, or are ELL.
- ✓ 48 of these seats have no priority

Scenario 1: Let's say there are 25 applicants who are eligible for the priority.

- Because there are 52 seats that have the priority, these 25 eligible applicants will gain admission to the school.
- The remaining 27 priority seats would be filled by other applicants through a random lottery - along with the 48 non-prioritized seats.
- The school will have 25 students who are low-income, in temporary housing or English Language Learners (25%).

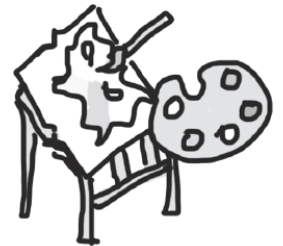
Scenario 2: Let's say there are 75 applicants who are eligible for the priority.

- 52 of the 75 eligible applicants will be matched to the 52 priority seats. They will be matched based on the random number assigned to them in the lottery.
- The other 23 applicants are placed in the lottery for the 48 seats that have no priority - along with all other applicants.
- The school will have at least 52% of applicants matched who are low-income, in temporary housing or ELLs.
- There may be more students who are low-income, in temporary housing or English Language Learners who are matched to the school through the lottery for the 48 non-prioritized seats.

Do my application choices matter?

YES. The most important factor in deciding where your child goes to middle school is how you complete their middle school application.

- Always place your choices in your true order of preference, with your favorite program as #1. There is no advantage to placing them in any other order.
- Each child will be considered first for their first-choice school, then for their second-choice school, and so on.



Key dates

Fall	Attend open houses and middle school fairs Contact schools directly to learn when to visit, and come to the District 15 Middle School Fair on October 17.
Late October	Access the middle school application in MySchools
December 3	Apply to middle school by December 3, 2018
April	Get your child's middle school offer

Resources

Learn more

- 2019 NYC Middle School Directory | schools.nyc.gov/Middle
- Middle school admissions email list | schools.nyc.gov/Connect
- Your zoned school | schools.nyc.gov/Find-a-School
- D15 Working Group's recommendations | d15diversityplan.com

Get help with your application

- Your school counselor
- Visit a Family Welcome Center | schools.nyc.gov/WelcomeCenters
- Office of Student Enrollment | **718-935-2009**